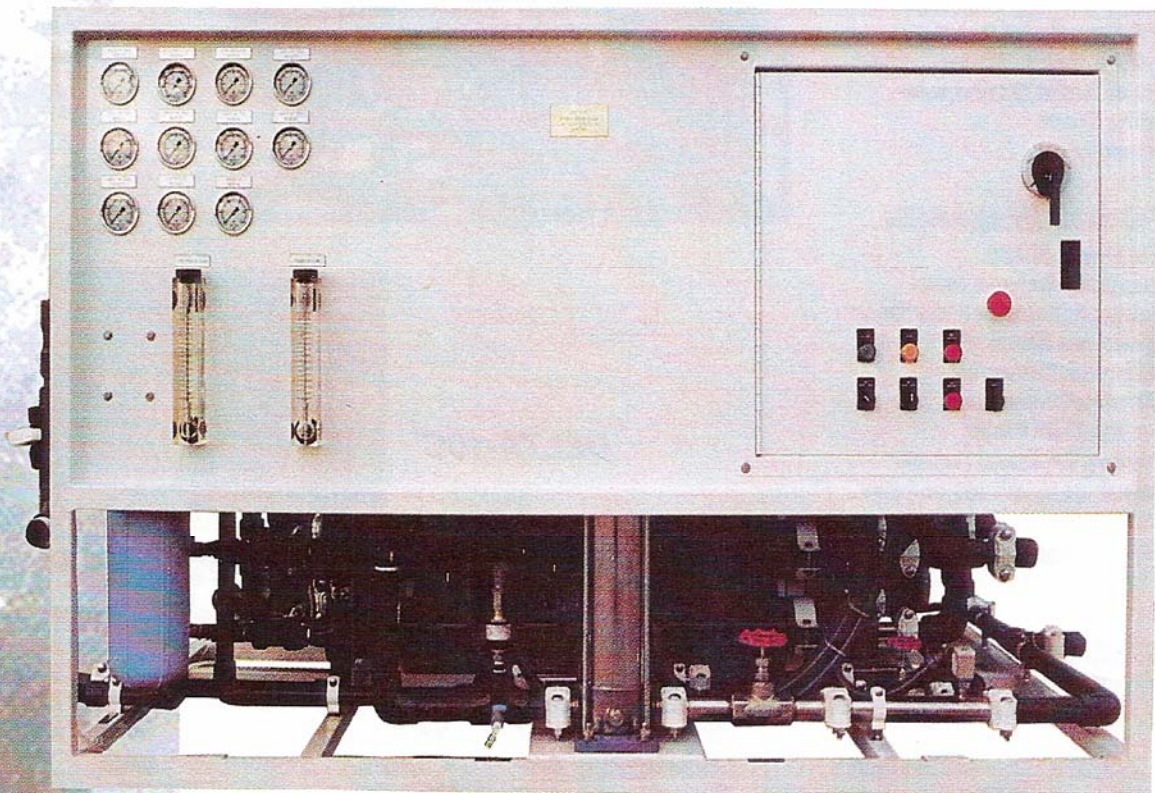


DELTA Series Compact Reverse Osmosis Systems 5 to 15 Gallons Per Minute



MODEL DELTA-15C
21,600 GPD of Reverse Osmosis Water

US Engineered Products Inc.
300 Old Reading Pike
Stowe, PA 19464

Products and Services for the Water Treatment Industry

Phone: 610-327-1965 Fax: 610-906-1520 Email: usengineeredpro@comcast.net

US Engineered Products Inc.
300 Old Reading Pike
Stowe, PA 19464

DELTA SERIES COMPACT REVERSE OSMOSIS SYSTEMS
5 to 15 GALLONS PER MINUTE

STANDARD FEATURES

- 316SS High Pressure Valves
- Low/High Pressure Alarms
- Compact Painted Steel Frame
- Automatic Feed Water Shut-off Valve
- 316SS Liquid Filled Pressure Gauges
- 5-Micron Sediment Prefilter
- 304SS Centrifugal Pump
- Thin Film, Spiral-Wound, Brackish Water Membranes
- Cleaning Ports
- Flowmeters

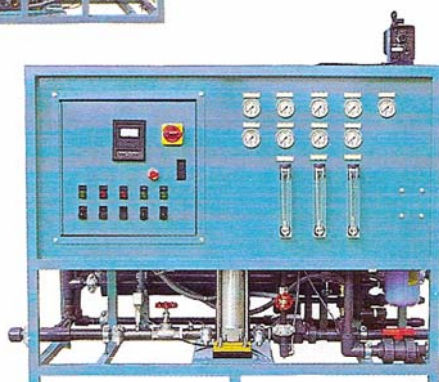


(shown with optional pre-treatment)

OPTIONAL FEATURES

- 316SS Pump (60Hz)
- Concentrate Recycle Valve
- Concentrate Recycle Flow Meter
- Single-phase Motor (60Hz only)
- TDS Monitor/Controller
- pH Monitor/Controller
- Automatic Fast Flush
- Fiberglass Pressure Vessels
- Temperature Monitor/Controller
- 50 Hz Motor
- Chemical Dosing

DELTA-10C



SYSTEM SPECIFICATIONS:

Model	Production*		3rd Year Operating Pressure	Inlet Size (psi)	No. of 4" x 40" Elements	Designed Recovery (without recycle)	MOTOR HP (3-Phase):	
	GPD	LPD					60Hz 230/460 Volts	50Hz 220/380/415 Volts
DELTA-5C	7,200	27.3	157	1.5"	6	45%	5	4
DELTA-7C	10,080	38.2	166	1.5"	8	50%	5	4
DELTA-10C	14,400	54.5	180	1.5"	11	50%	5	5.5
DELTA-15C	24,600	81.8	174	1.5"	17	55%	5	5.5

*Based on feed water with TDS of 1,000 ppm and temperature of 25°C (77°F)

WEIGHTS & DIMENSIONS: (Optional features may increase dimensions)

Model	Approximate Shipping Dimensions				Approximate System Dimensions			
	Length (in/cm)	Width (in/cm)	Height (in/cm)	Weight (lbs/kg)	Length (in/cm)	Width (in/cm)	Height (in/cm)	Weight (lbs/kg)
DELTA-5C	70/178	43/110	58/147	650/295	61/155	34/86	48/122	380/175
DELTA-7C	70/178	43/110	58/147	730/330	61/155	34/86	48/122	460/210
DELTA-10C	70/178	43/110	58/147	820/370	61/155	34/86	48/122	550/250
DELTA-15C	70/178	56/142	58/147	1230/560	61/155	47/119	48/122	930/425